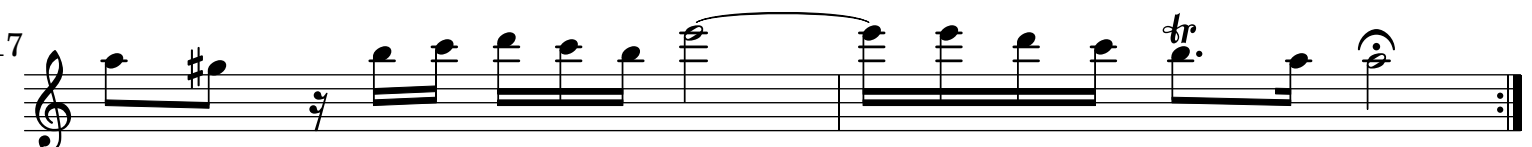
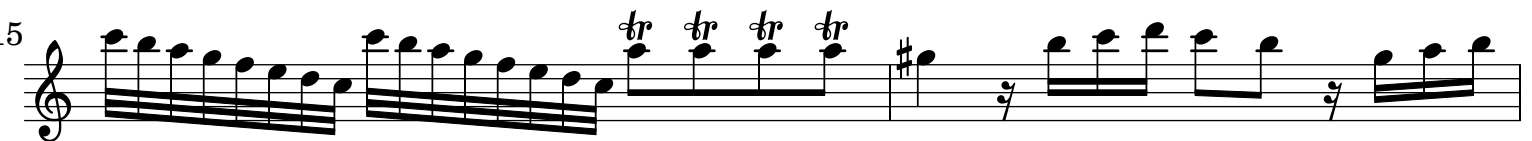
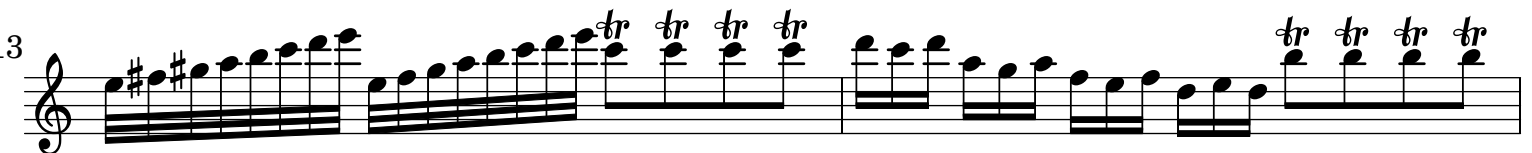
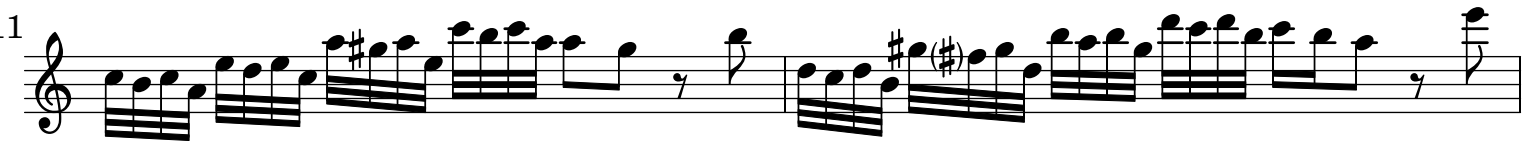
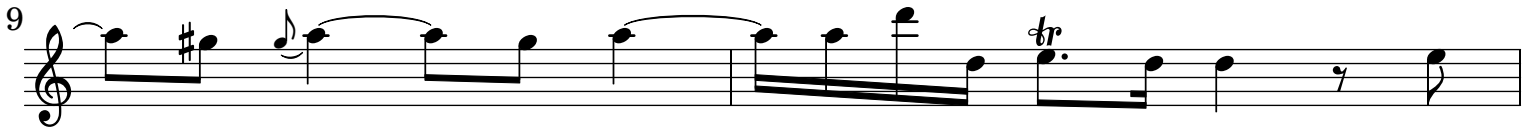
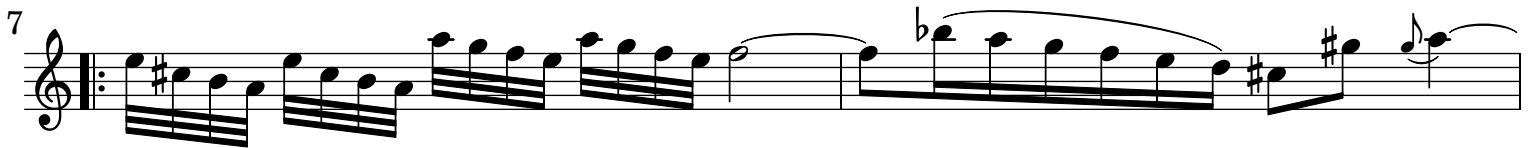
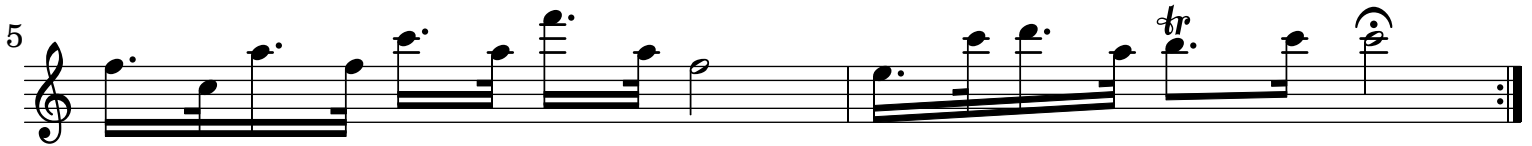


Sonata per Flauto, Fagotto e Basso [RV 86]

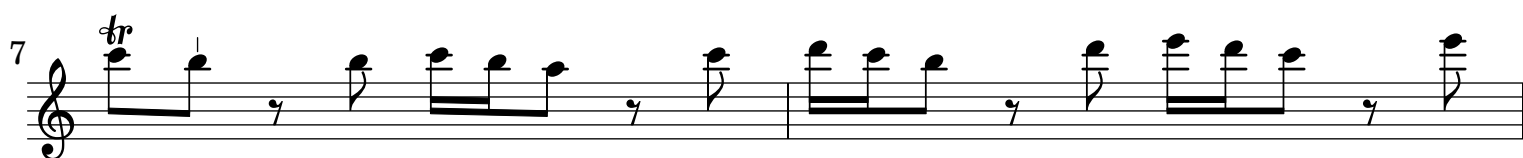
Flauto

A. Vivaldi (1678-1741)

[1.] Largo



[2.] All[egr]o



Musical score for Flute, measures 23-45. The score is written in treble clef and includes various musical notations such as eighth notes, sixteenth notes, and trills. The key signature is one flat (B-flat).

Measures 23-24: Eighth notes, trill, and rests.

Measures 25-27: Trills and eighth notes.

Measures 28-29: Eighth notes with a sharp sign.

Measures 30-31: Eighth notes with a sharp sign.

Measures 32-34: Eighth notes with a sharp sign and a trill.

Measures 35-36: Eighth notes with a slur.

Measures 37-38: Eighth notes with a slur and a sharp sign.

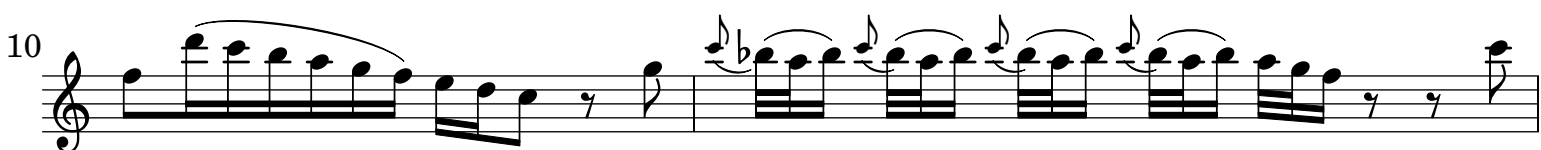
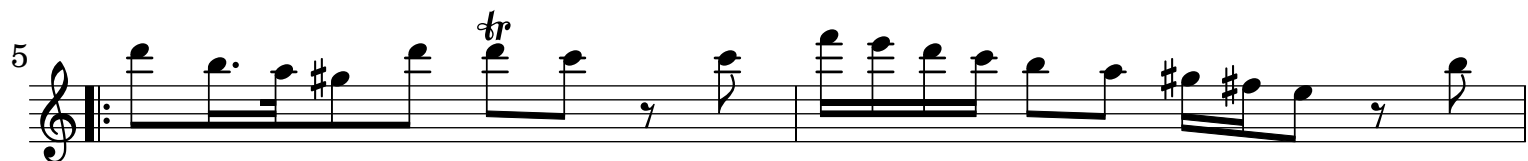
Measures 39-40: Eighth notes with a slur.

Measures 41-42: Eighth notes with a sharp sign and a slur.

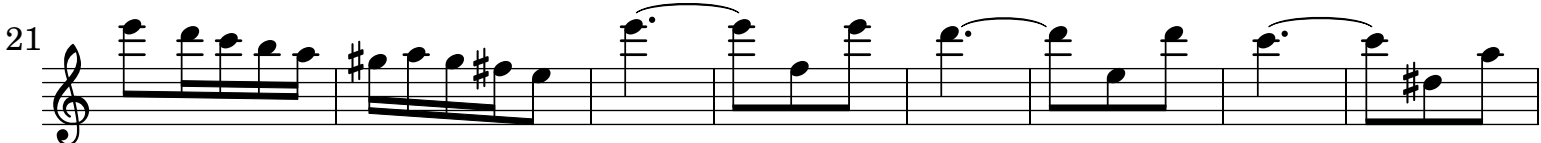
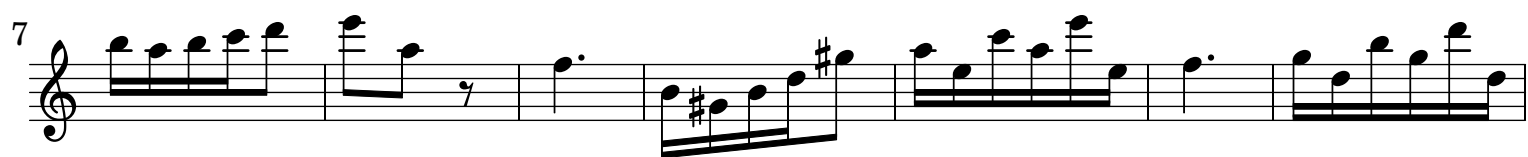
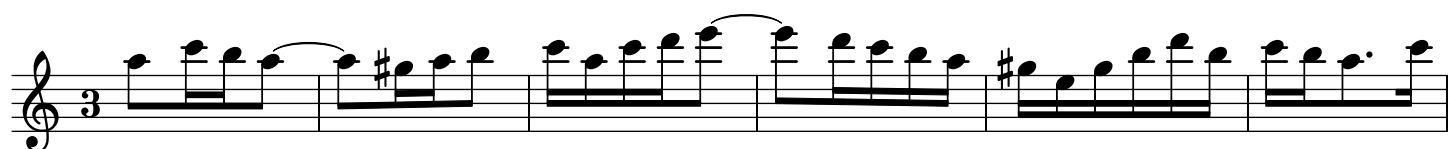
Measures 43-44: Eighth notes with a sharp sign and a slur.

Measures 45: Eighth notes with a sharp sign, a trill, and a slur.

[3.] Largo cantabile



[4.] All[egr]o molto



Musical score for Flute, measures 35 to 105. The score is written in treble clef with a key signature of one sharp (F#). The music features a variety of rhythmic patterns, including eighth and sixteenth notes, and rests. Measure 35 includes a trill (tr.) and a 4-measure rest. Measure 64 includes a 7-measure rest. Measure 71 includes a 7-measure rest. Measure 95 includes a 5-measure rest. The score concludes with a fermata in measure 105.