

## Concerto à 4 Violini No. 1

## Violino 2

Georg Philipp Telemann (1681–1767)

TWV 40:201

Largo

2

10

17

24

30

37

*tr*

**Allegro**

3

7

10

15

19

22

26

30

34

38

42

**Adagio**

## Vivace

Musical score for Violino 2, page 3, starting with the tempo marking "Vivace". The score is written in treble clef, key of D major (one sharp), and 3/8 time. It consists of ten staves of music, with measure numbers 9, 18, 27, 36, 48, 59, 70, 80, 90, 100, and 110 indicated at the beginning of each staff. The music features a variety of rhythmic patterns, including eighth and sixteenth notes, and rests. Dynamic markings *p* (piano) and *f* (forte) are present at measures 70 and 80. There are also triplets and a doublet indicated by the numbers 3 and 2 above the notes. The score concludes with a double bar line at measure 110.

# Concerto à 4 Violini No. 2

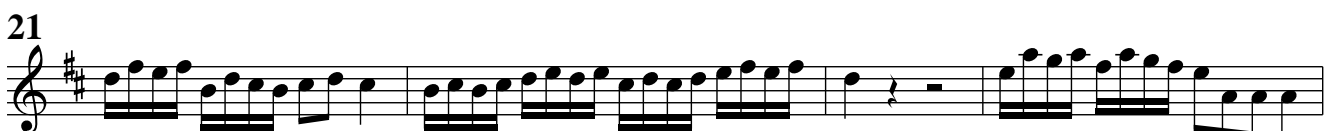
Georg Philipp Telemann (1681–1767)  
TWV 40:202

## Violino 2

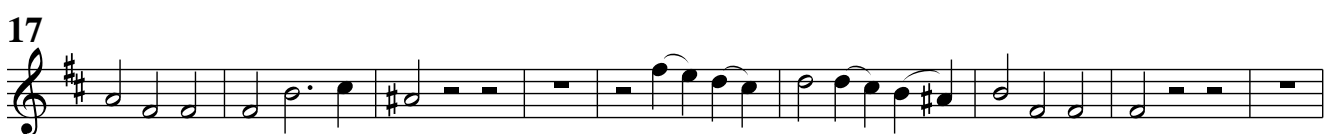
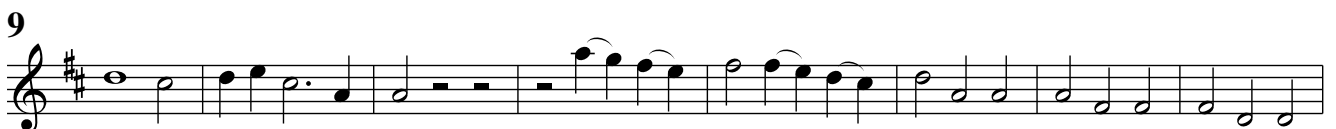
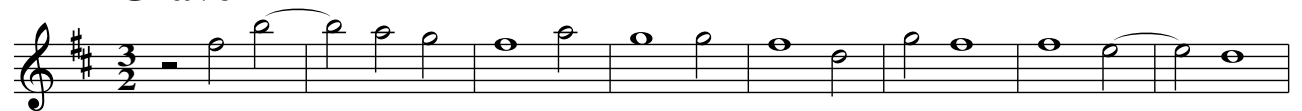
**Adagio**



**Allegro**



**Grave**





## Concerto à 4 Violini No. 3

## Violino 2

Georg Philipp Telemann (1681–1767)  
TWV 40:203

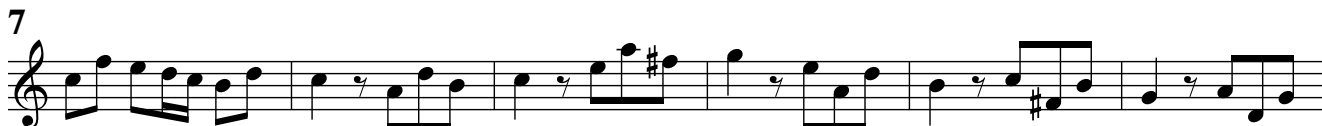
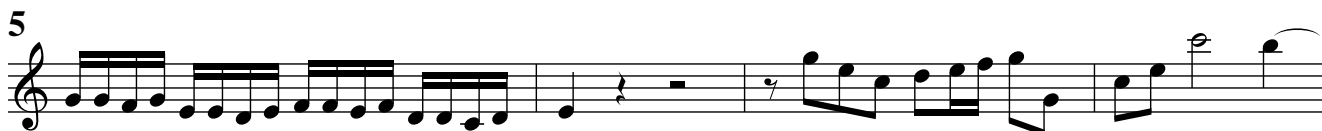
## Grave

Musical score for Violino 2, Grave section. The score is written in treble clef with a common time signature (C). It consists of four staves of music. The first staff begins with a whole rest, followed by a series of quarter and eighth notes. The second staff continues the melody with quarter notes and a half note. The third staff features a series of eighth notes with dynamic markings *p*, *pp*, *ppp*, and *f* underneath. The fourth staff concludes the section with a half note and a whole rest.

## Allegro

Musical score for Violino 2, Allegro section. The score is written in treble clef with a common time signature (C). It consists of six staves of music. The first staff begins with a whole rest, followed by a series of eighth notes. The second staff continues the melody with eighth notes and a half note. The third staff features a series of eighth notes with a sharp sign above the first note. The fourth staff continues the melody with eighth notes and a sharp sign above the first note. The fifth staff continues the melody with eighth notes and a sharp sign above the first note. The sixth staff concludes the section with a half note and a sharp sign above the first note.



**Largo e staccato****Allegro**



12



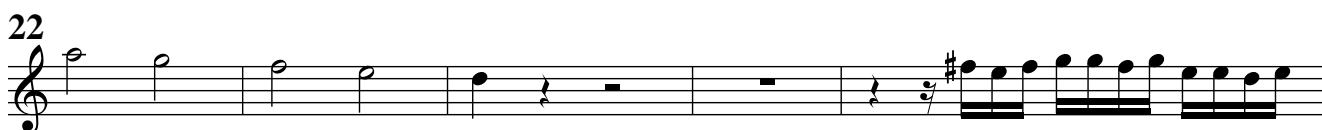
15



18



22



27



29



33



37



40



43



# Concerto à 4 Violini No. 4

Georg Philipp Telemann (1681–1767)

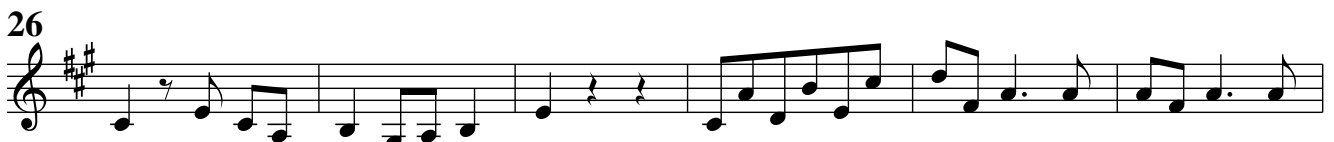
TWV 40:204

## Violino 2

### Grave



### Allegro



37



42



46



51



55



58



61



67



74



80



**Adagio**

Musical score for Violino 2, Adagio section. The score is written in treble clef with a key signature of two sharps (F# and C#) and a common time signature (C). The tempo is marked Adagio. The score consists of three staves of music. The first staff begins with a common time signature and contains a melodic line with various intervals and accidentals. The second staff continues the melodic line, and the third staff concludes the section with a final note and a double bar line.

**Spiritoso**

Musical score for Violino 2, Spiritoso section. The score is written in treble clef with a key signature of two sharps (F# and C#) and a common time signature (C). The tempo is marked Spiritoso. The score consists of seven staves of music. The first staff begins with a common time signature and contains a melodic line with various intervals and accidentals. The second staff continues the melodic line, and the third staff concludes the section with a final note and a double bar line. The score includes dynamic markings such as *f* (forte), *p* (piano), and *f* (forte) throughout the section.

18

*f* *p* *f*

22

24

*p* *f* *p* *f*

27

*p*

29

*f* *f* *p*

32

*p* *f*

35

39

44

46

*p* *f* *p* *f*

49

13